

Acaso sao Estes

(Modinha)

Con Calma

Gitaar 1

Gitaar 2

5

1

2

8

1

2

11

1

2

14

1

2

Cadenza -----

18

1

2

21

1

2

24

Animato

1

2

29

1

2

35

1

2

Acaso sao Estes

Con Calma

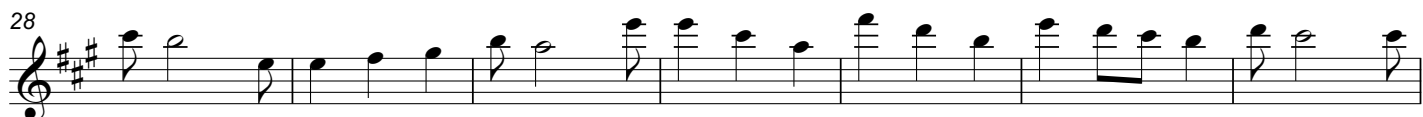


Cadenza -----



-----|

Animato



Acaso sao Estes

(Modinha)

Con Calma

Measures 1-5 of the guitar score. The music is in G major (one sharp) and 3/4 time. The melody consists of eighth notes with a rhythmic pattern of eighth notes followed by a quarter note. The bass line consists of quarter notes.

Measures 6-9 of the guitar score. The melody continues with the same rhythmic pattern. The bass line consists of quarter notes.

Measures 10-13 of the guitar score. The melody continues with the same rhythmic pattern. The bass line consists of quarter notes.

Measures 14-19 of the guitar score. Measures 14-15 continue the previous pattern. Measures 16-17 feature a change in the bass line with a half note and a quarter note. Measures 18-19 return to the previous pattern.

Measures 20-22 of the guitar score. The melody continues with the same rhythmic pattern. The bass line consists of quarter notes.

Measures 23-26 of the guitar score. The melody continues with the same rhythmic pattern. The bass line consists of quarter notes.

Animato

Measures 27-33 of the guitar score. The tempo changes to Animato. The melody is mostly rests, with chords in the bass line. The bass line consists of half notes.

Measures 34-37 of the guitar score. Measure 34 starts with a triplet of eighth notes in the melody. The bass line consists of half notes. The piece ends with a double bar line.