

Bright Eyes

Arr. C. Hartog/Mark de Gooijer

(Uit Waterschapsheuvel)

Mike Batt

Andante

Gitaar 1

Gitaar 2

5

1

2

C F C C

10

1

2

Am F C C G7 C F

15

1

2

F Dm G G7 G C C F C

20

1

2

C Am F C C G7

25

1

2

Chord progression for measures 25-30: C, F, F, Dm, E, B7, C, G7.

30

1

2

Chord progression for measures 31-34: C, C, Em, F, G7.

35

1

2

Chord progression for measures 35-39: G, Em, F, Dm, Dm.

40

1

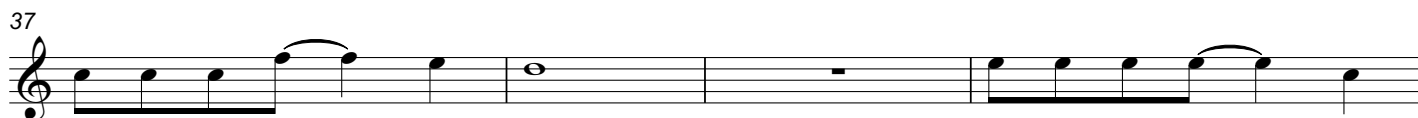
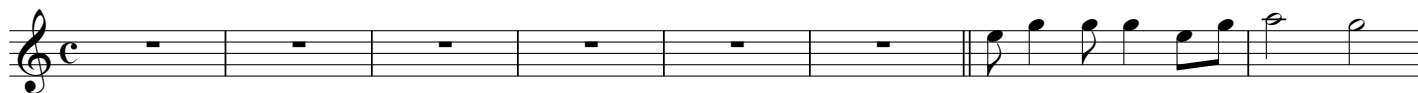
2

Chord progression for measures 40-45: E, Am, G, C, F, Dm, G7, C.

Bright Eyes

(Uit Waterschapsheuvel)

Andante



Bright Eyes

Andante

The image displays a guitar score for the song 'Bright Eyes' by Mike Batt, arranged by C. Hartog and Mark de Gooijer. The score is written for guitar 2 and is set in a slow tempo (Andante). It consists of ten staves of music, each with a corresponding guitar chord diagram above it. The chords are: C, F, C, C, Am (6); F, C, C, G7, C, F, F, Dm (11); G, G7, G, C, C, F, C, C (16); Am, F, C, C, G7, C, F (21); F, Dm, E, B7, C, G7, C (26); C, Em, F, G7, G (31); Em, F, Dm, Dm (36); E, Am, G, C, F, Dm, G7, C (40). The score includes various musical notations such as treble clefs, common time signatures, and rests.