

# Eight famous Jigs and Reels

Traditional

Arr. Winslow Hayden (1839-1886)

## Scottish Jig

♩. = 70

The first system of the Scottish Jig consists of six measures. The melody is written on a treble clef staff with a key signature of three sharps (F#, C#, G#) and a 6/8 time signature. The bass line is written on a bass clef staff with a key signature of one sharp (F#). The melody features eighth and sixteenth notes, while the bass line consists of dotted half notes.

The second system of the Scottish Jig consists of five measures. It begins with a repeat sign. The melody continues with eighth and sixteenth notes, and the bass line remains dotted half notes.

The third system of the Scottish Jig consists of five measures. The melody continues with eighth and sixteenth notes, and the bass line remains dotted half notes.

## Joys of Wedlock (Jig)

♩. = 80

The first system of the Joys of Wedlock (Jig) consists of six measures. The melody is written on a treble clef staff with a key signature of three sharps (F#, C#, G#) and a 6/8 time signature. The bass line is written on a bass clef staff with a key signature of one sharp (F#). The melody features eighth and sixteenth notes, while the bass line consists of dotted half notes.

The second system of the Joys of Wedlock (Jig) consists of five measures. It begins with a repeat sign. The melody continues with eighth and sixteenth notes, and the bass line remains dotted half notes.

The third system of the Joys of Wedlock (Jig) consists of five measures. The melody continues with eighth and sixteenth notes, and the bass line remains dotted half notes.

## Go to the Devil and shake Yourself (Jig)

The first system of the Go to the Devil and shake Yourself (Jig) consists of six measures. The melody is written on a treble clef staff with a key signature of three sharps (F#, C#, G#) and a 6/8 time signature. The bass line is written on a bass clef staff with a key signature of one sharp (F#). The melody features eighth and sixteenth notes, while the bass line consists of dotted half notes.

The second system of the Go to the Devil and shake Yourself (Jig) consists of five measures. It begins with a repeat sign. The melody continues with eighth and sixteenth notes, and the bass line remains dotted half notes.

The third system of the Go to the Devil and shake Yourself (Jig) consists of five measures. The melody continues with eighth and sixteenth notes, and the bass line remains dotted half notes.

## Larry O' Gaff (Jig)

♩ = 70

50

Measures 50-55 of 'Larry O' Gaff (Jig). The music is in 3/4 time with a key signature of three sharps (F#, C#, G#). Measure 50 starts with a repeat sign and a triplet of eighth notes. The melody consists of eighth and quarter notes. The bass line features a steady eighth-note accompaniment.

56

Measures 56-60 of 'Larry O' Gaff (Jig). Measure 56 continues the melody and bass line. Measure 59 ends with a double bar line and repeat sign. Measure 60 begins with a single eighth note followed by a quarter rest, then continues the melody and bass line.

61

Measures 61-65 of 'Larry O' Gaff (Jig). Measures 61-64 continue the melody and bass line. Measure 65 ends with a double bar line and repeat sign.

## Devil's Dream (Reel)

♩ = 120

67

Measures 67-70 of 'Devil's Dream (Reel). The music is in 2/4 time with a key signature of three sharps (F#, C#, G#). Measure 67 starts with a repeat sign. The melody is composed of eighth notes. The bass line consists of half notes.

71

Measures 71-74 of 'Devil's Dream (Reel). Measures 71-73 continue the melody and bass line. Measure 74 ends with a double bar line and repeat sign.

75

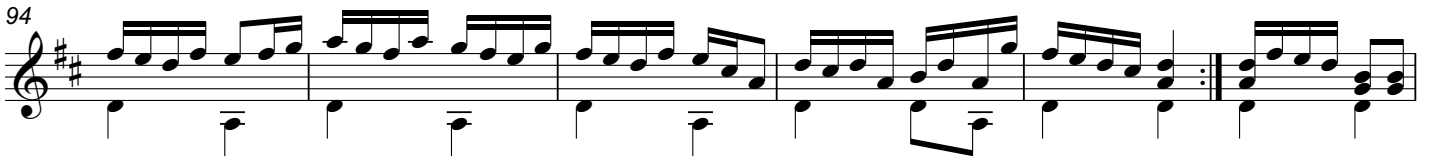
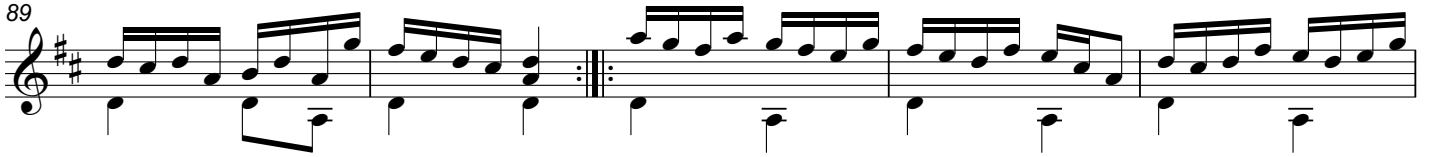
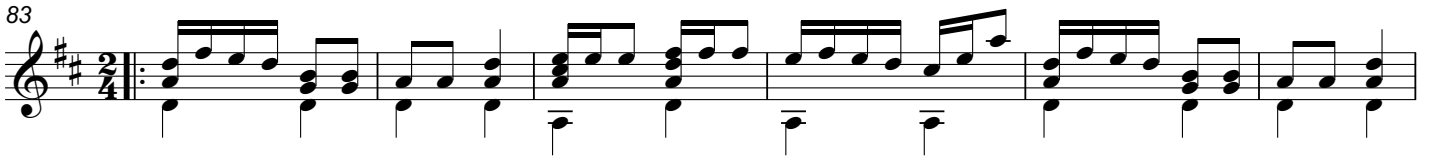
Measures 75-78 of 'Devil's Dream (Reel). Measures 75-77 continue the melody and bass line. Measure 78 ends with a double bar line and repeat sign.

79

Measures 79-82 of 'Devil's Dream (Reel). Measures 79-81 continue the melody and bass line. Measure 82 ends with a double bar line, a key signature change to two sharps (F#, C#), and a 2/4 time signature.

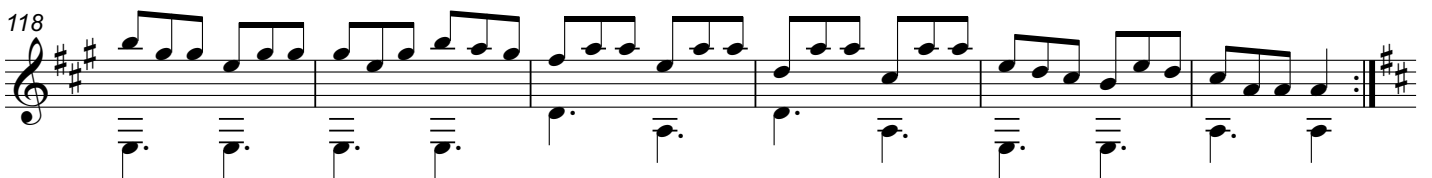
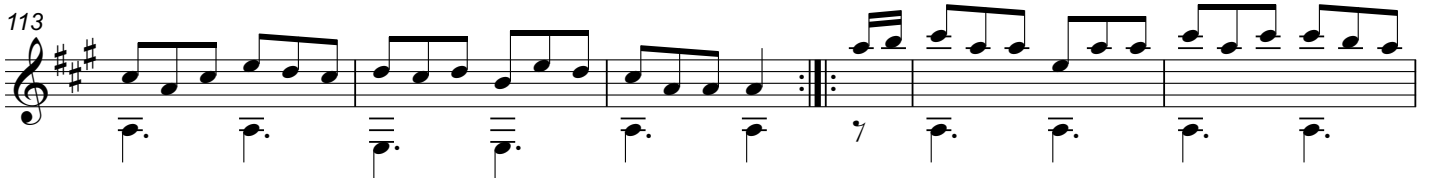
## Arkansas Traveller (Reel)

♩ = 90



## Irish Washerwoman (Jig)

♩ = 70



## St. Patrick's Day (Jig)

