

Robin is to the Greenwood Gone

Arr. Mark de Gooijer

(Engels Volksliedje/English Folk Song)

Thomas Robinson (1588-1610)

♩=86

Gitaar 1

Gitaar 2

8

Git. 1

Git. 2

15

Git. 1

Git. 2

20

Git. 1

Git. 2

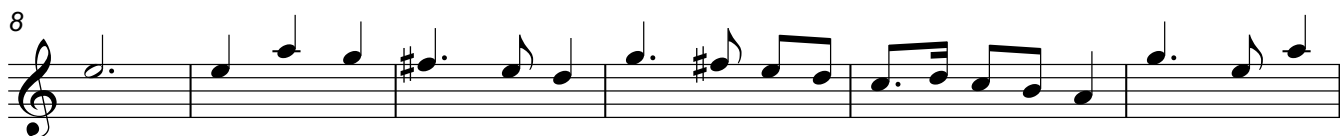
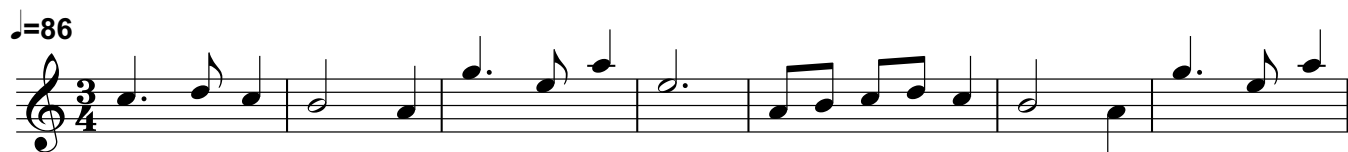
Gitaar 1

Robin is to the Greenwood Gone

(Engels Volksliedje/English Folk Song)

Arr. Mark de Gooijer

Thomas Robinson (1588-1610)



Gitaar 2

Robin is to the Greenwood Gone

Arr. Mark de Gooijer

(Engels Volksliedje/English Folk Song) Thomas Robinson (1588-1610)

$\text{♩} = 86$

Measures 1-6 of the guitar arrangement. The music is in 3/4 time and D major. It begins with a treble clef and a key signature of one sharp (F#). The notation includes chords, eighth notes, and a repeat sign at the end of the first measure.

Measures 7-11 of the guitar arrangement. The notation continues with eighth notes and chords, featuring a repeat sign at the end of measure 10.

Measures 12-17 of the guitar arrangement. The notation continues with eighth notes and chords, featuring a repeat sign at the end of measure 16.

Measures 18-21 of the guitar arrangement. The notation continues with eighth notes and chords, featuring a repeat sign at the end of measure 20.

Measures 22-25 of the guitar arrangement. The notation continues with eighth notes and chords, ending with a double bar line and repeat dots at the end of measure 25.