

# Zigeunerlied

Louis Spohr (1784-1859)

♩ = 60

Gitaar 1

Gitaar 2

6

1

2

11

1

2

17

1

2

22

1

2

Detailed description: This system contains measures 22 through 26. The upper staff (labeled '1') features a melodic line with eighth and quarter notes, including a sharp sign on the second staff line. The lower staff (labeled '2') provides a harmonic accompaniment with chords and moving lines, including a double bar line and a fermata over the final measure.

27

1

2

Detailed description: This system contains measures 27 through 31. The upper staff (labeled '1') continues the melodic line with a fermata over the third measure. The lower staff (labeled '2') continues the accompaniment with various chordal textures and rests.

32

1

2

Detailed description: This system contains measures 32 through 36. The upper staff (labeled '1') shows a melodic line with a flat sign on the second staff line. The lower staff (labeled '2') continues the accompaniment with chords and rests.

37

1

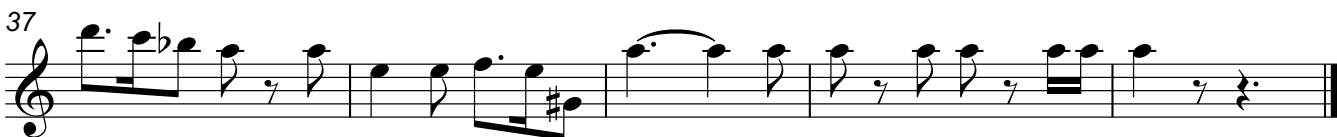
2

Detailed description: This system contains measures 37 through 41. The upper staff (labeled '1') features a melodic line with a flat sign on the second staff line and a fermata over the third measure. The lower staff (labeled '2') continues the accompaniment with chords and rests, ending with a double bar line.

# Zigeunerlied

Louis Spohr (1784-1859)

♩ = 60



# Zigeunerlied

Louis Spohr (1784-1859)

♩. = 60

Measures 1-6 of the guitar score. The music is in 6/8 time and begins with a whole rest in the first measure. The melody consists of eighth and sixteenth notes, while the bass line features a steady eighth-note accompaniment.

Measures 7-12. The melody continues with eighth and sixteenth notes, including some chromatic passages. The bass line remains consistent with eighth-note accompaniment.

Measures 13-18. The melody features a mix of eighth and sixteenth notes. The bass line continues with eighth-note accompaniment.

Measures 19-24. The melody includes some chromaticism and rests. The bass line continues with eighth-note accompaniment.

Measures 25-30. The melody continues with eighth and sixteenth notes. The bass line continues with eighth-note accompaniment.

Measures 31-36. The melody features a mix of eighth and sixteenth notes. The bass line continues with eighth-note accompaniment.

Measures 37-42. The final section of the score, ending with a double bar line. The melody concludes with a few final notes, and the bass line continues with eighth-note accompaniment.