

# Largo

(Uit/from Sonata in A minor, Op. 2 Nr. 11)

Benedetto Marcello (1686-1739)

Largo

Fluit

Gitaar

Measures 1-7: Flute part features a steady eighth-note pattern in the right hand and a melodic line in the left hand. The guitar accompaniment consists of block chords and single notes, providing a harmonic foundation.

8 *tr*

Fl.

Git.

Measures 8-14: The flute part includes a trill (tr) in measure 8. The guitar accompaniment continues with block chords and melodic fragments.

15

Fl.

Git.

Measures 15-19: The flute part features a rapid sixteenth-note passage. The guitar accompaniment remains primarily chordal.

20 *tr*

Fl.

Git.

Measures 20-26: The flute part includes another trill (tr) in measure 20. The guitar accompaniment features a melodic line in the right hand starting in measure 24.

27 *tr*

Fl.

Git.

Measures 27-33: The flute part includes a trill (tr) in measure 27. The guitar accompaniment concludes with a melodic phrase in the right hand.

34

Fl.

Git.

40

Fl.

Git.

45

Fl.

Git.

51

Fl.

Git.

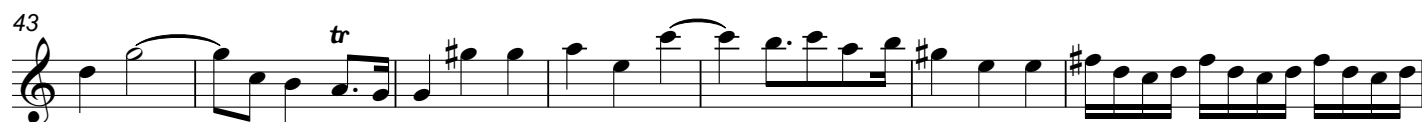
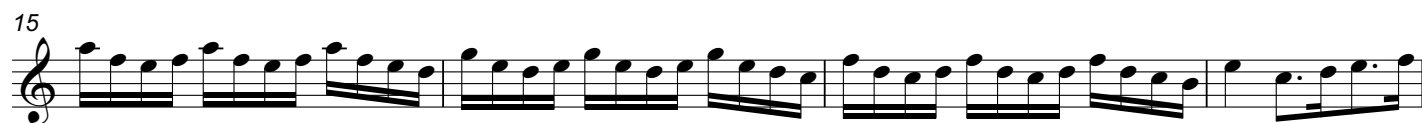
55

Fl.

Git.

(Uit/from Sonata in A minor, Op. 2 Nr. 11)

Largo



Gitaar

# Largo

(Uit/from Sonata in A minor, Op. 2 Nr. 11) Benedetto Marcello (1686-1739)

Largo

